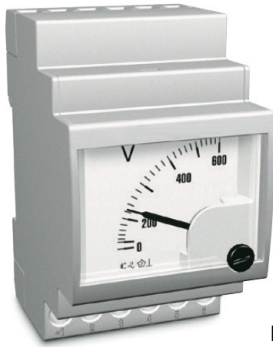


analogue measuring instruments
DC - voltage

3 Modules - DIN 43700
class 1.5



MCM

display

pointer
unit
accuracy class referred to the full-scale value

black conform to DIN 43802 – scale plate division 90°
A
1,5

input

connection
voltage U_n

direct
1 | 1,5 | 2,5 | 4 | 5 | 6 | 10 | 15 | 20 | 25 | 40 | 60 | 100 | 150 | 250
300 | 400 | 500 | 600V DC

overload
burden

1,2 x U_n | 2x U_n for less as 0,5 seconds
1000 Ω / V

standards

CEI EN610 10-1 CEI EN 60051-1-2

environmental conditions

reference temperature
operating temperature
effect temperature
storage temperature

20°C +/- 1°C
20°C +/- 10°C (-10...+55°C without damage in continuous use)
+/- 0,05% / °C
-40....+70°C

housing

front frame
mounting
depth of housing
connection
housing
protection
weight

52,5x 45mm
din-rail 35mm
58mm
screws
thermoplastic according to UL-94, V-O classification
IP 40
ca. 0,12 kg

Connection / dimensions

