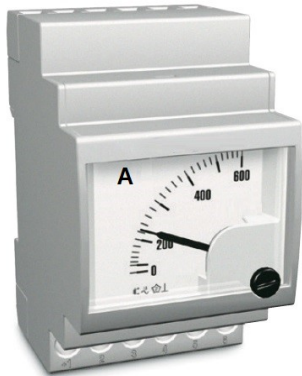


analogue measuring instruments  
AC - current

3 Modules - DIN 43700  
class 1.5



MIM

## display

pointer  
unit  
accuracy class referred to the full-scale value

black conform to DIN 43802 – scale plate division 90°  
A  
1,5

## input

connection  
current  $I_n$   
overload  
burden  
frequency

direkt oder über Wandleranschluß .../5A oder .../1A  
1 | 1,5 | 2,5 | 4 | 5 | 6 | 10 | 15 | 20 | 25 | 30A AC  
1xIn | **2xIn** (Standard) | 5xIn  
0,3VA  
40....60Hz

## standards

CEI EN610 10-1 CEI EN 60051-1-2

## environmental conditions

reference temperature  
operating temperature  
effect temperature  
storage temperature

20°C +/- 1°C  
20°C +/- 10°C (-10...+55°C without damage in continuous use)  
+/- 0,05% / °C  
-40....+70°C

## housing

front frame  
mounting  
depth of housing  
connection  
housing  
protection  
weight

52,5x 45mm  
din-rail 35mm  
58mm  
screws  
thermoplastic according to UL-94, V-O classification  
IP 40  
ca. 0,12 kg

## connection / dimensions



current AC, direct bis max. 30A



with current-transformer

